



**India Meteorological Department
(Ministry of Earth Sciences)**

NATIONAL BULLETIN NO. 37 (BOB/04/2023)

TIME OF ISSUE: 0800 HOURS IST

DATED: 25.10.2023

FROM: INDIA METEOROLOGICAL DEPARTMENT (FAX NO. 24643965/24699216/24623220)

TO: CONTROL ROOM, NDM, MINISTRY OF HOME AFFAIRS (FAX.NO. 23093750)

CONTROL ROOM NDMA (FAX.NO. 26701729)

CABINET SECRETARIAT (FAX.NO.23012284, 23018638)

PS TO HON'BLE MINISTER FOR S & T AND EARTH SCIENCES (FAX NO.23316745)

SECRETARY, MOES (FAX NO. 24629777)

H.Q. (INTEGRATED DEFENCE STAFF AND CDS) (FAX NO. 23005137/23005147)

DIRECTOR GENERAL, DOORDARSHAN (23385843)

DIRECTOR GENERAL, AIR (23421105, 23421219)

PIB MOES (FAX NO. 23389042)

UNI (FAX NO. 23355841)

D.G. NATIONAL DISASTER RESPONSE FORCE (NDRF) (FAX NO. 26105912, 2436 3260)

DIRECTOR, PUNCTUALITY, INDIAN RAILWAYS (FAX NO. 23388503)

ADMINISTRATOR, LAKSHADWEEP ISLANDS (FAX NO. 0413-262184)

CHIEF SECRETARY, KERALA (FAX NO. 0471-2327176)

CHIEF SECRETARY, KARNATAKA (FAX NO. 080-22258913)

CHIEF SECRETARY, GOA (FAX NO. 0832-2415201)

CHIEF SECRETARY, MAHARASHTRA (FAX NO. 022- 22028594)

CHIEF SECRETARY, GUJARAT (FAX NO. 079-23250305)

CHIEF SECRETARY, DAMAN & DIU (FAX NO. 0260-2230775)

CHIEF SECRETARY, DADRA & NAGAR HAVELI (FAX NO. 0260-2645466)

CHIEF SECRETARY, ODISHA (FAX NO. 0674-2536660)

CHIEF SECRETARY, WEST BENGAL (FAX NO. 033-22144328)

CHIEF SECRETARY, ANDHRA PRADESH (FAX NO. 0863-2441029, 08645-246600)

CHIEF SECRETARY, TAMIL NADU (FAX NO 044-25672304)

CHIEF SECRETARY, PUDUCHERRY (FAX NO 0413-2334145)

CHIEF SECRETARY, GOVT. OF TRIPURA (FAX NO. 0381-2414013, 2413200)

CHIEF SECRETARY, GOVT. OF MIZORAM (FAX NO. 0389-2322745, 2320588)

CHIEF SECRETARY, GOVT. OF MANIPUR (FAX NO. 0385-2452629)

CHIEF SECRETARY, GOVT. OF NAGALAND (FAX NO. 0370-2270057)

ADMINISTRATOR, ANDAMAN & NICOBAR ISLANDS (FAX NO. 03192- 232656)

Sub: Cyclonic Storm "Hphoon" (pronounced as Hphoon) over coastal Bangladesh

The Cyclonic Storm "Hphoon" (pronounced as Hphoon) over coastal Bangladesh moved nearly northeastwards with a speed of 15 kmph during past 6 hours and lay centered at 0530 hours IST of 25th October over coastal Bangladesh near latitude 22.2°N and longitude 92.2°E, about 40 km east-southeast of Chittagong (Bangladesh).

It is very likely to move northeastwards and weaken into a deep depression during next 06 hours and further into a depression during subsequent 06 hours.

Forecast track and intensity are given below:

Date/Time (IST)	Position (Lat. °N/ long. °E)	Maximum sustained surface wind speed (Kmph)	Category of cyclonic disturbance
25.10.23/0530	22.2/92.2	60-70 gusting to 80	Cyclonic Storm
25.10.23/1130	22.8/92.7	50-60 gusting to 70	Deep Depression
25.10.23/1730	23.4/93.2	35-45 gusting to 55	Depression
25.10.23/2330	24.0/93.7	25-35 gusting to 45	Well Marked Low Pressure Area

Warnings:

(i) Rainfall Warning:

Manipur, Mizoram & Tripura and south Assam & Meghalaya: Light to moderate rainfall is very likely at many places with isolated heavy rainfall over Mizoram on 25th October. Light to moderate rainfall is likely at many places over Mizoram and Tripura on 26th October. Light to moderate rainfall is very likely at many places over Nagaland, Manipur and east Arunachal Pradesh on 25th & 26th October.

(ii) Wind warning (warning graphics enclosed):

- **Northeast Bay of Bengal:**

Gale wind speed reaching **60-70 kmph gusting to 80 kmph** is prevailing and likely to decrease gradually becoming **Squally wind** speed reaching **45-55 kmph gusting to 65 kmph** by 25th noon and would decrease thereafter.

- **Northwest Bay of Bengal:**

Squally wind speed reaching **40-50 kmph gusting to 60 kmph** is prevailing and likely to continue during next 06 hours and decrease thereafter.

- **Adjoining eastcentral Bay of Bengal:** **Squally wind** speed reaching **45-55 kmph gusting to 65 kmph** is prevailing, likely to continue during next 06 hours and decrease thereafter.

- **Along & off Bangladesh and north Myanmar coasts:**

Gale wind speed reaching **60-70 kmph gusting to 80 kmph** is prevailing along & off Bangladesh and adjoining north Myanmar coast and likely to decrease gradually become **squally wind** speed reaching **40-50 kmph gusting to 60 kmph** by 25th noon and would decrease further thereafter.

Squally wind speed reaching **50-60 kmph gusting to 70 kmph likely** along & off remaining parts of north Myanmar coast during the same period and decrease thereafter.

Mizoram, Tripura, south Assam and Manipur:

Squally wind speed reaching **30-40 kmph gusting to 50 kmph** is likely to prevail over Mizoram and Tripura and **Strong wind** speed reaching **25-35 kmph gusting to 45 kmph** over south Assam & Manipur on 25th October.

(iii) Sea Condition

- **Northeast Bay of Bengal and along & off Bangladesh & adjoining north Myanmar coasts:** **High sea condition** is prevailing and likely to continue during next 06 hours and would become **very rough to rough** thereafter for subsequent 06 hours.
- **Northwest Bay of Bengal:** **Rough** sea conditions are prevailing and likely to continue **during next 06 hours**.
- **Adjoining eastcentral Bay of Bengal:** **Very rough to rough** sea condition is prevailing, likely to become **rough** during next 6 hours and improve thereafter.

(iv) Fishermen Warning (Graphics attached):

Fishermen are advised not to venture into

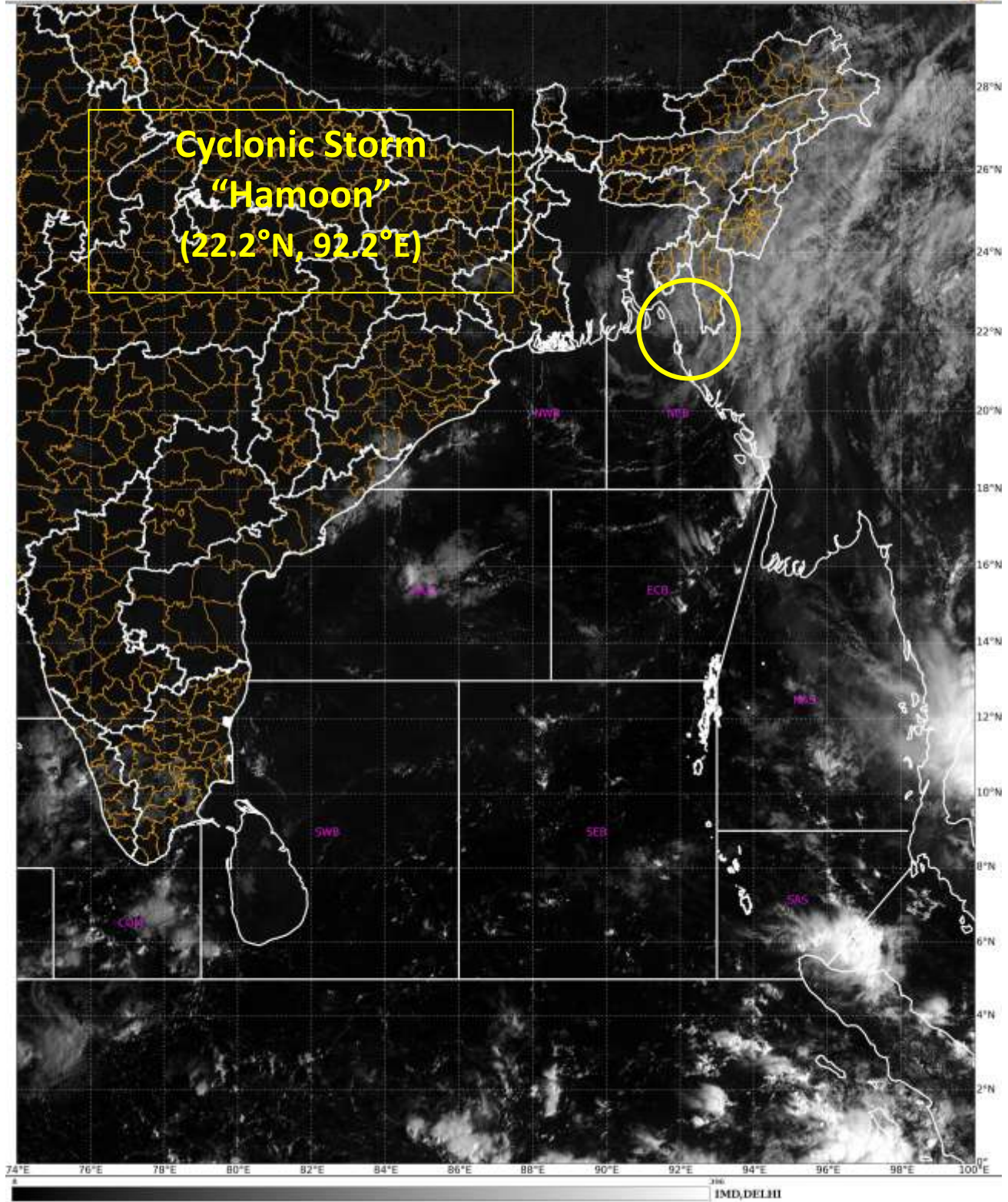
- ❖ **Northeast Bay of Bengal and along & off Bangladesh & north Myanmar coasts till 25th October.**
- ❖ **Adjoining areas of northwest Bay of Bengal and Eastcentral Bay of Bengal till 25th October noon.**

System is under continuous surveillance and the next bulletin will be issued at 1130 hours IST of 25th October, 2023.

(Shobhit Katiyar)
Scientist D, Cyclone Warning Division, New Delhi

Copy to: ACWC Mumbai/ ACWC Chennai/ ACWC Kolkata/CWC Ahmedabad/CWC Bhubaneswar/CWC Vishakhapatnam/CWC Thiruvananthapuram/MC Goa

Spatial rainfall distribution: Isolated: <25%, A few: 26-50%, Many: 51-75%, Most: 76-100%
Rainfall amount (mm): Heavy rain: 64.5 – 115.5, Very heavy rain: 115.6 – 204.4, Extremely heavy rain: 204.5 or more.





OBSERVED AND FORECAST TRACK ALONGWITH CONE OF UNCERTAINTY OF CYCLONIC STORM "HAMOON" OVER COASTAL BANGLADESH BASED ON 0000 UTC (0530 IST) OF 25TH OCTOBER 2023.



DATE/TIME IN UTC

IST=UTC + 0530

L: LOW PRESSURE AREA

WML: WELL MARKED LOW PRESSURE AREA

D: DEPRESSION (17-27 KT)

DD: DEEP DEPRESSION (28-33 KT)

CS: CYCLONIC STORM (34-47 KT)

VSCS: VERY SEVERE CYCLONIC STORM (64-89 KT)

ESCS: EXTREMELY SEVERE CYCLONIC STORM (90-119 KT)

SuCS: SUPER CYCLONIC STORM (≥ 120 KT)

● LESS THAN 34 KT

○ 34-47 KT

○ ≥ 48 KT

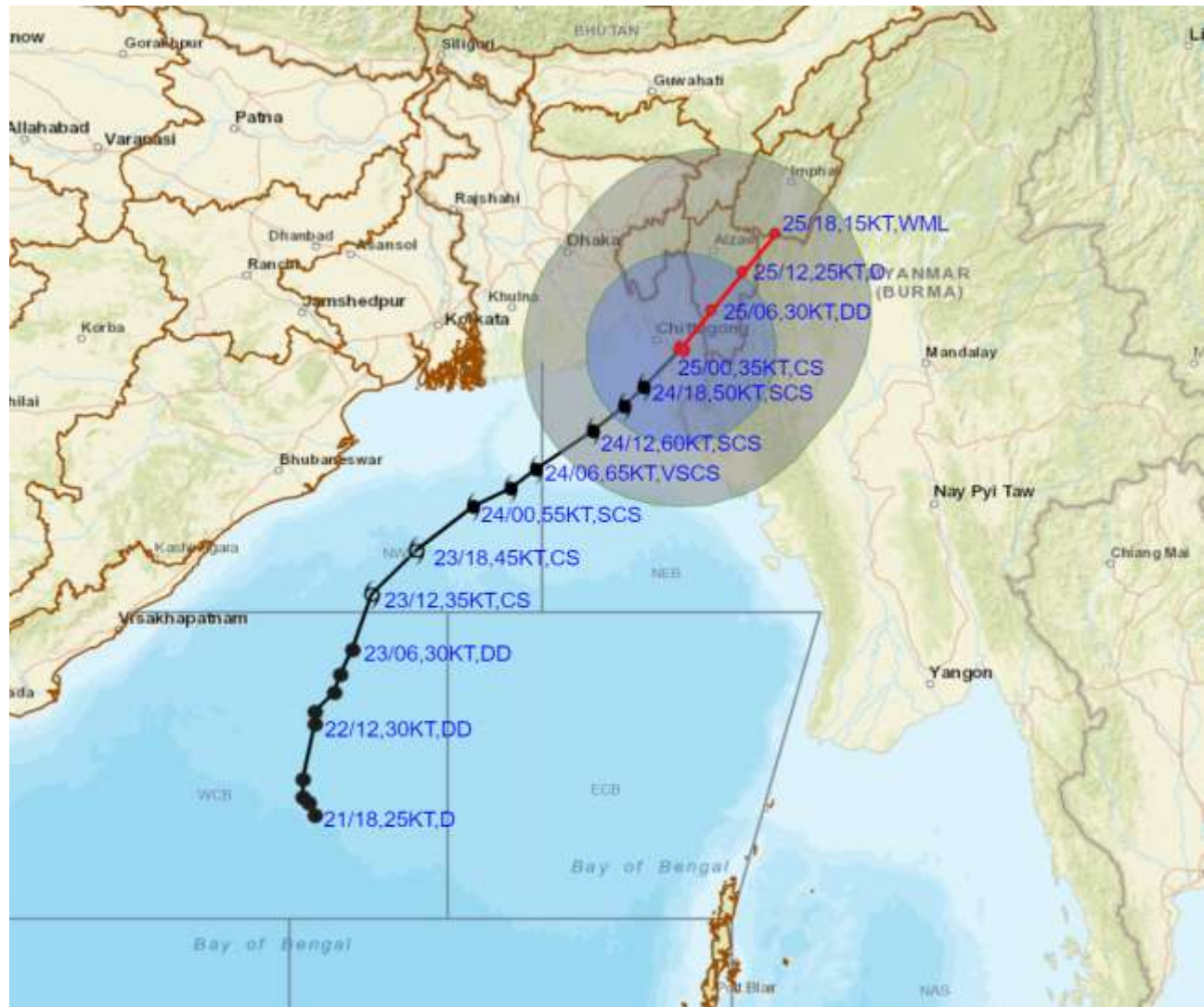
— OBSERVED TRACK

— FORECAST TRACK

▲ CONE OF UNCERTAINTY



OBSERVED AND FORECAST TRACK ALONGWITH QUADRANT WIND DISTRIBUTION OF SEVERE CYCLONIC STORM "HAMOON" OVER COASTAL BANGLADESH BASED ON 0000 UTC (0530 IST) OF 25TH OCTOBER 2023.



DATE/TIME IN UTC

IST=UTC + 0530

L: LOW PRESSURE AREA

WML: WELL MARKED LOW PRESSURE AREA

D: DEPRESSION (17-27 KT)

DD: DEEP DEPRESSION (28-33 KT)

CS: CYCLONIC STORM (34-47 KT)

SCS: SEVERE CYCLONIC STORM (48-63KT)

VSCS: VERY SEVERE CYCLONIC STORM (64-89 KT)

ESCS: EXTREMELY SEVERE CYCLONIC STORM (90-119 KT)

SuCS: SUPER CYCLONIC STORM (≥20 KT)

● LESS THAN 34 KT

○ 34-47 KT

● ≥ 48 KT

— OBSERVED TRACK

— FORECAST TRACK

▲ CONE OF UNCERTAINTY

AREA OF MAXIMUM SUSTAINED WIND SPEED:

■ 28-33 KT (52-61 KMPH)

■ 34-49 KT (62-91 KMPH)

■ 50-63 KT (92-117 KMPH)

■ ≥ 64 KT (≥118 KMPH)

IMPACT OVER THE SEA

MSW (knot/kmph)	Impact	Action
28-33 (52-61)	Very rough seas	Total suspension of fishing operations
34-49 (62-91)	High to very high seas	Total suspension of fishing operations
50-63 (92-117)	Very high seas	Total suspension of fishing operations
≥ 64 (≥118)	Phenomenal	Total suspension of fishing operations

Fishermen warning graphics

Day 1: 25.10.2023/05:30AM to 26.10.2023/05:30AM



Day 2: 26.10.2023/05:30AM to 27.10.2023/05:30AM



Day 3: 27.10.2023/05:30AM to 28.10.2023/05:30AM



Day 4: 28.10.2023/05:30AM to 29.10.2023/05:30AM



Squally WX with wind speed 40-45 kmph gusting to 55 kmph

Squally WX with wind speed 45-55 kmph gusting to 65 kmph

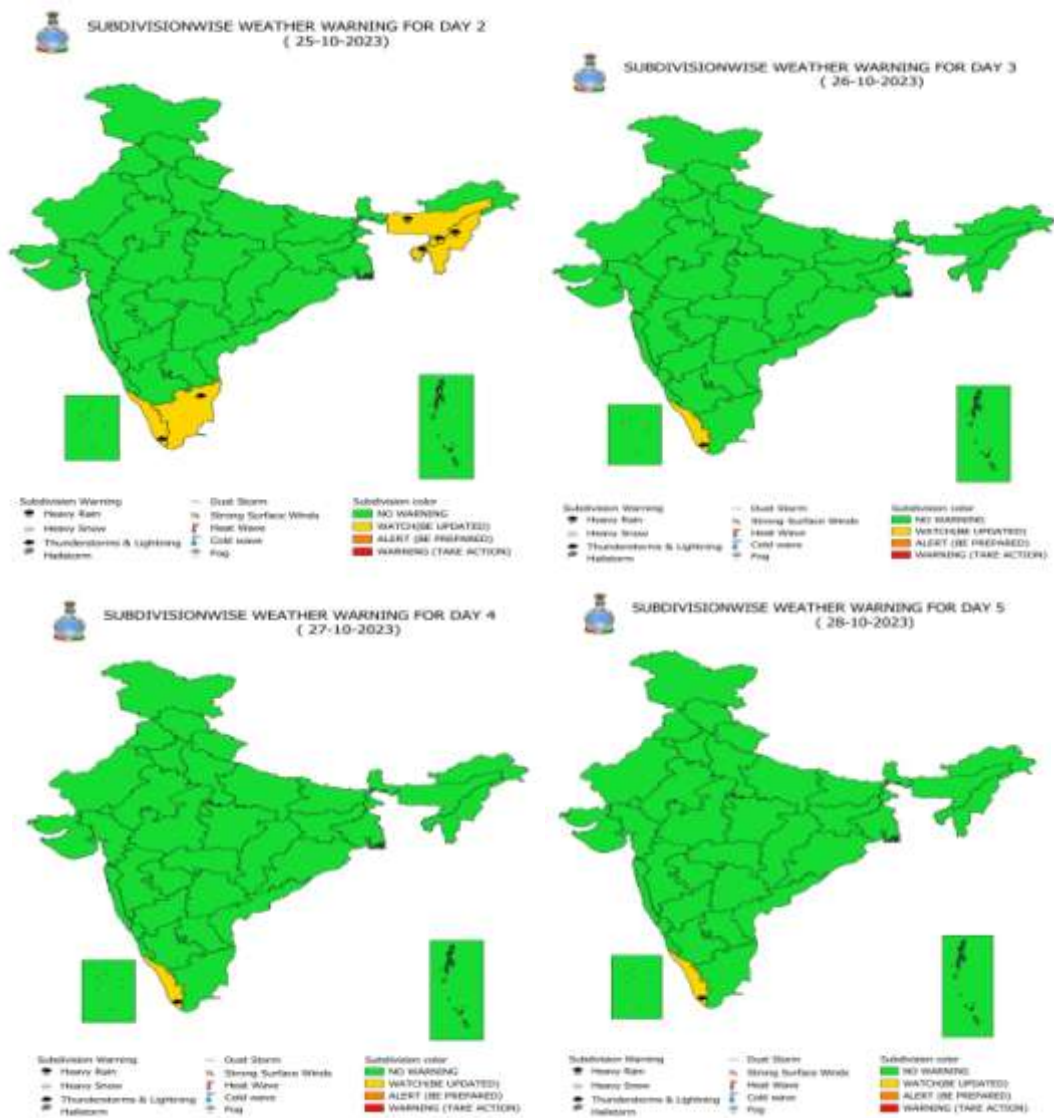
Squally wind with speed 50-60 kmph gusting to 70 kmph

CS with Gale wind speed 60-90 kmph gusting to 110 kmph

SCS with Gale wind speed 90-110 kmph gusting to 120 kmph

Fishermen are advised not to venture into the marked areas.

WEATHER WARNING GRAPHICS



WATCH(BE UPDATED)
 ALERT (BE PREPARED)
 WARNING (TAKE ACTION)